



**CANCELLED
CONTRACT
100 BIKE
CONTEMPORARY
CYCLE HUB
NOW AVAILABLE
AT HALF PRICE**



contact



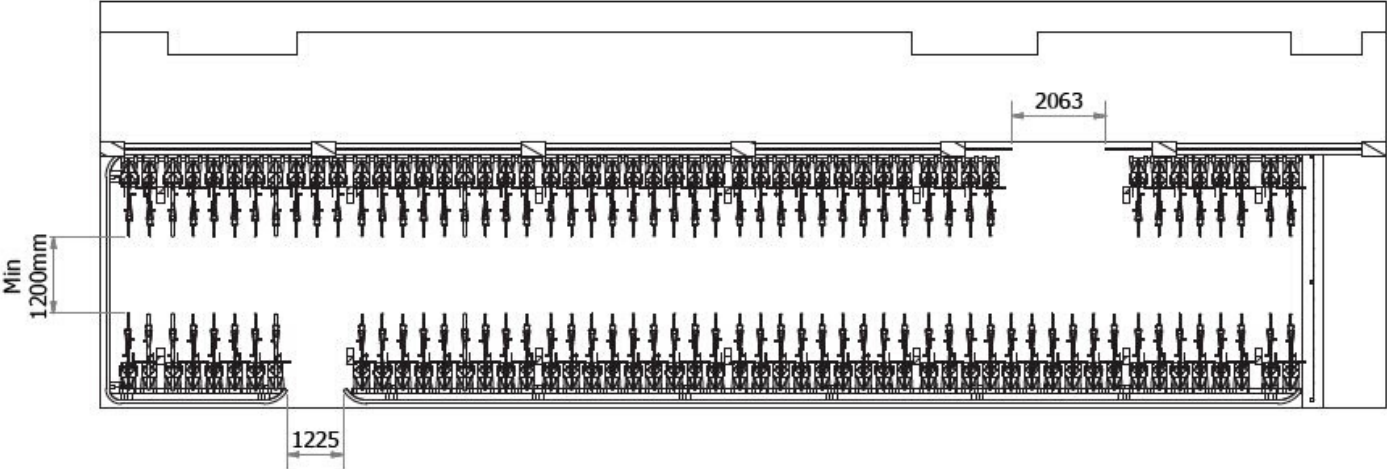
01380 840 819

THE COMPLETE HUB LAYOUT

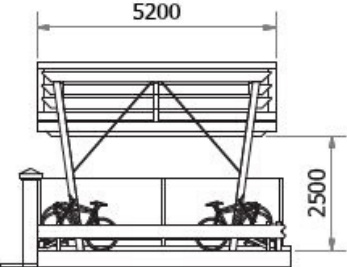
ask us for more info



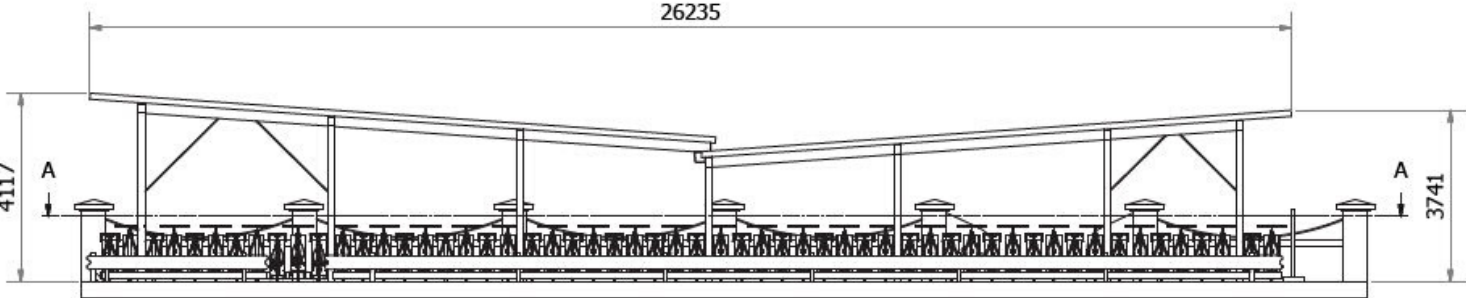
01380 840 819



Section A-A
(1 : 100) @ A3



West Elevation
(1 : 100) @ A3



South Elevation
(1 : 100) @ A3

CYCLE PARKING SPECIFICATION



2018V0012

CYCLE STREET



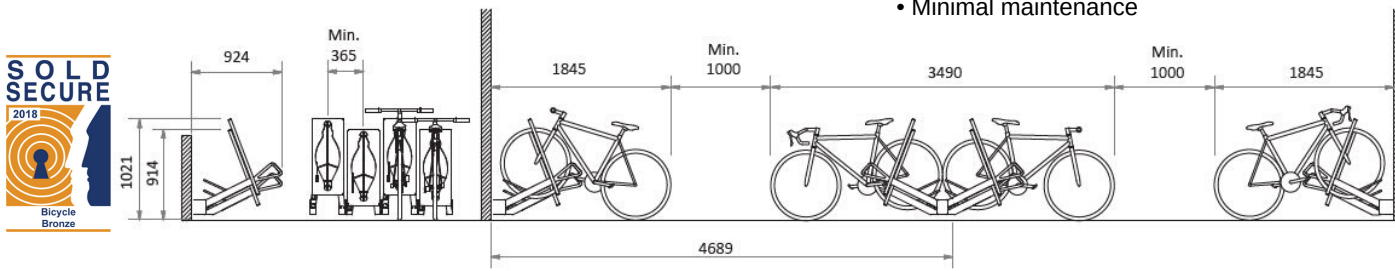
Secured by Design Approved universal, high density, bicycle caring parking system with retracting, single point locking arm and patented softdock® technology for everyone's bike. With Sold Secure and Secured by Design Cycle-street is ideal for external cycle hubs and anywhere you might require it within the urban realm.

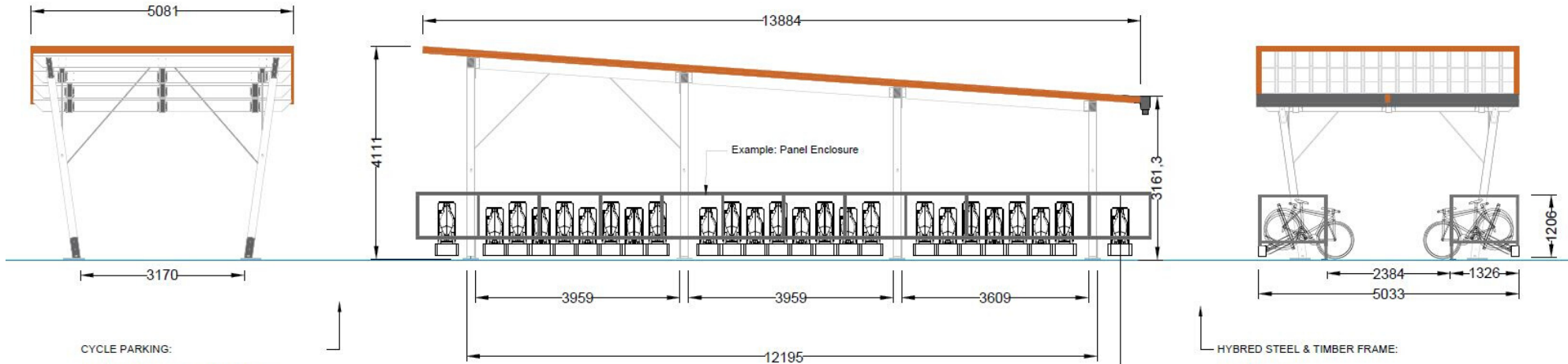
Benefits

- Sold Secure Bronze and Secured by Design
- Space efficient, high density parking
- Individual space suitable for everyone's bike
- Bike caring: no metal to metal contact
- Secure retracting single point locking arm
- Proven bike theft reduction
- Ground level, intuitive and easy parking
- Fast/efficient/cost effective installation
- Minimal maintenance

Features

- Patented softdock® technology
- Retracting single point locking arm
- 'Forward' & 'Backward' parking
- Variable parking densities available
- Fully engineered steel frame construction
- Choice of ground mounting options with minimal fixings
- 'fit & forget' system
- 48 month warranty ¹
- DiM (Demountable Identifiable Moveable)





CYCLE PARKING:

Cycle Street Mk.2 - Cycle Parking Units

- SMART systems ready*
- Variable Parking Densities
- Eclectic Bike Charging Point ready*
- User space availability beacon system ready*
- High security super tough units
- Simple to use individual parking bays
- Bespoke maintenance options
- Lease options available please ask for details

HYBRID STEEL & TIMBER FRAME:

Structural Timbers:

Kiln Dried - Oiled - UK Grown Douglas Fir C24 FSC Mix Credit.

Additional Processes:

K/D planed all round, pack saw BSC Mix Credit Cu.COC-813646 PAR to finish.

Timber Sections:

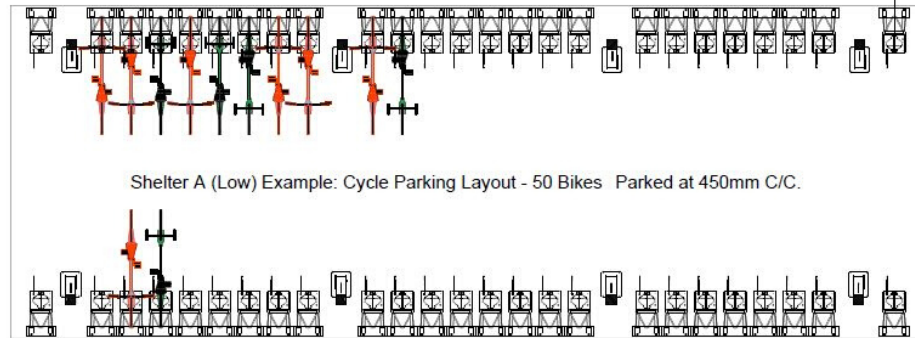
Columns 150x150mm Cross Beams and Stringers 150x225mm

Finishing:

Workshop Applied Complete Timber Treatment - 1# Osmo WR UV Base Coat 2# Osmo UV Natural Wood Stain.

Connecting Steelwork & Base Plates:

Non-preloaded structural bolting assemblies to BS EN 15048-1 > High strength structural bolting assemblies for pre-loading BS EN 14399-1 > De-burr and break sharp edges > Welding by certified coded welders to BS EN 1090 > All welds to be FPFW 6mm unless noted otherwise > All steel to be galvanized to BS EN ISO 1461 2009 - CSM unless noted. > Shot-blast and degrease prior to galvanizing > Drain holes required for galvanizing > All galvanized components shall be subjected to post galvanizing inspection: Visual inspection of 100% of all surfaces with special attention to areas around copes, welded connections and joints.

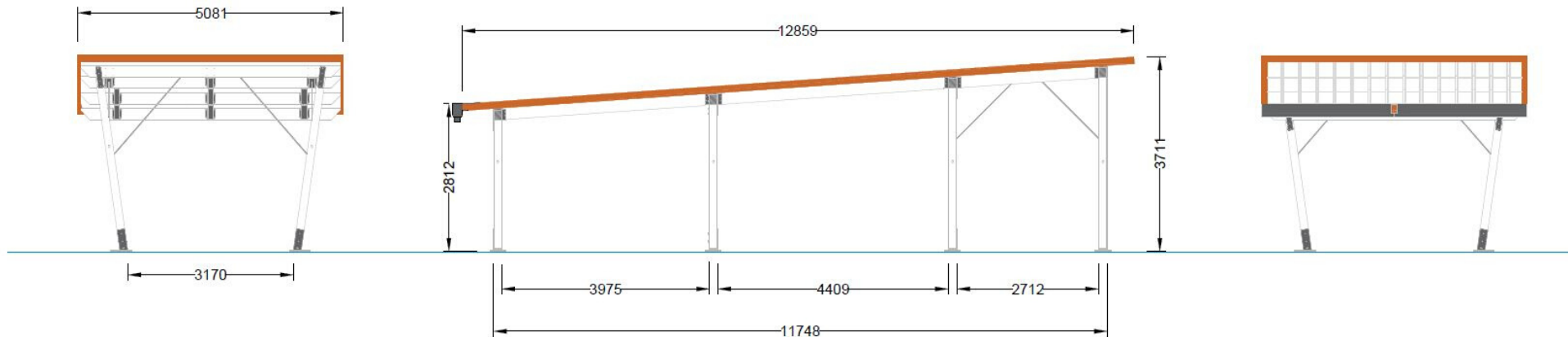


Shelter A (Low) Example: Cycle Parking Layout - 50 Bikes Parked at 450mm C/C.

HALF HUB LAYOUT EXAMPLE

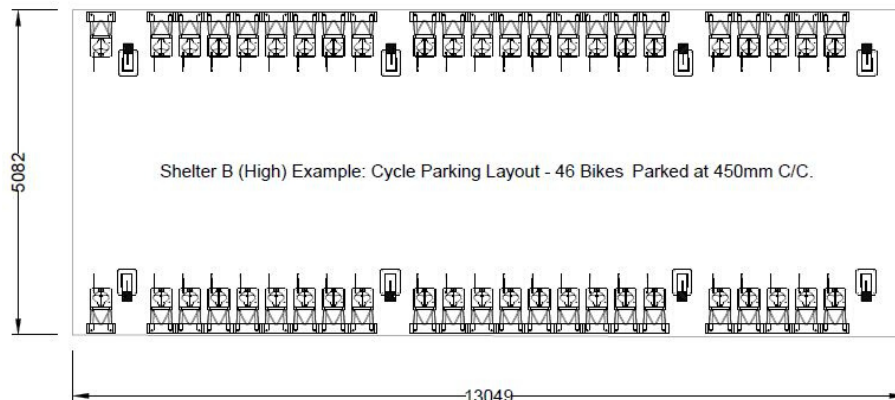
#1





HALF HUB LAYOUT EXAMPLE

#2



ask how we can
make this work for
your site and
requirements

SPEAK TO TIM ON

01380 840 819