

BA COMMENTS - 23/02/15

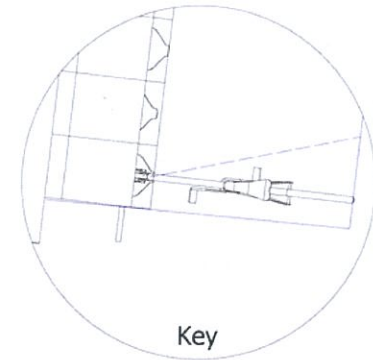
# 157CHLN\_Basement Cycle Storage Layout - Plan post site visit 03.02.15

This drawing is to be read in conjunction with 157CHLN Site visit report 030215

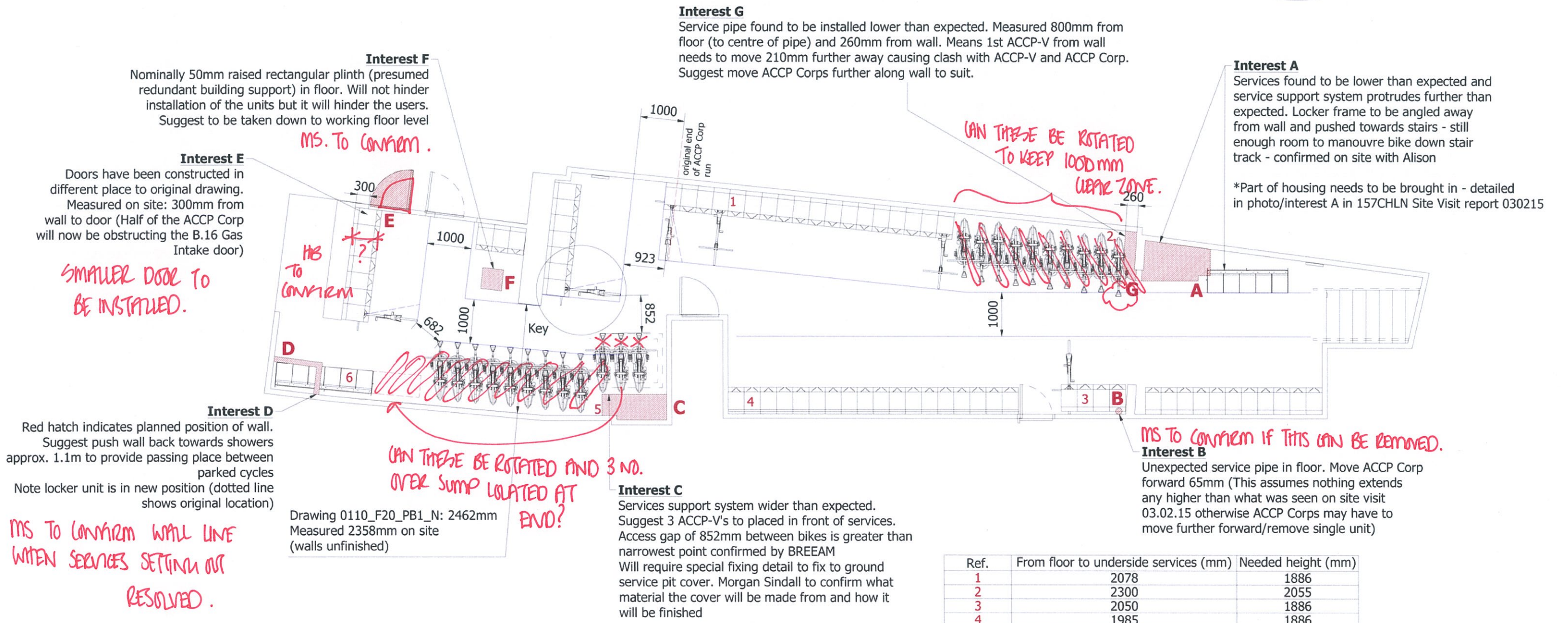
90 bike system with 90 integrated cycle specific lockers

**Summary:**

- 68 ACCP\_Corporate Base Units with
- 68 ACCP\_Corporate Lockers above
- 22 ACCP\_Vertical
- 22 Corporate\_Lockers



Blushed dashed line indicates line of bike when pivoted around handlebars. Shows that there is more space than perceived



Ref.	From floor to underside services (mm)	Needed height (mm)
1	2078	1886
2	2300	2055
3	2050	1886
4	1985	1886
5	2020	2055**
6	2096	1906

N.B Measurements were taken on 03.02.15 before the floor has been levelled. We have been told to assume the floor level will raise by 5mm

\*\* The part of the product that is this high should sit forward of the services pipework

- N.B.
1. All ACCP\_Corp and ACCP\_Vert assumed to be floor fixed into concrete
  2. 12 Corporate\_Lockers next to shower room entrance assumed to be hung on frame that is mounted to floor
  3. 10 Corporate\_Lockers next to stairs assumed to be hung on frame that is mounted to floor

