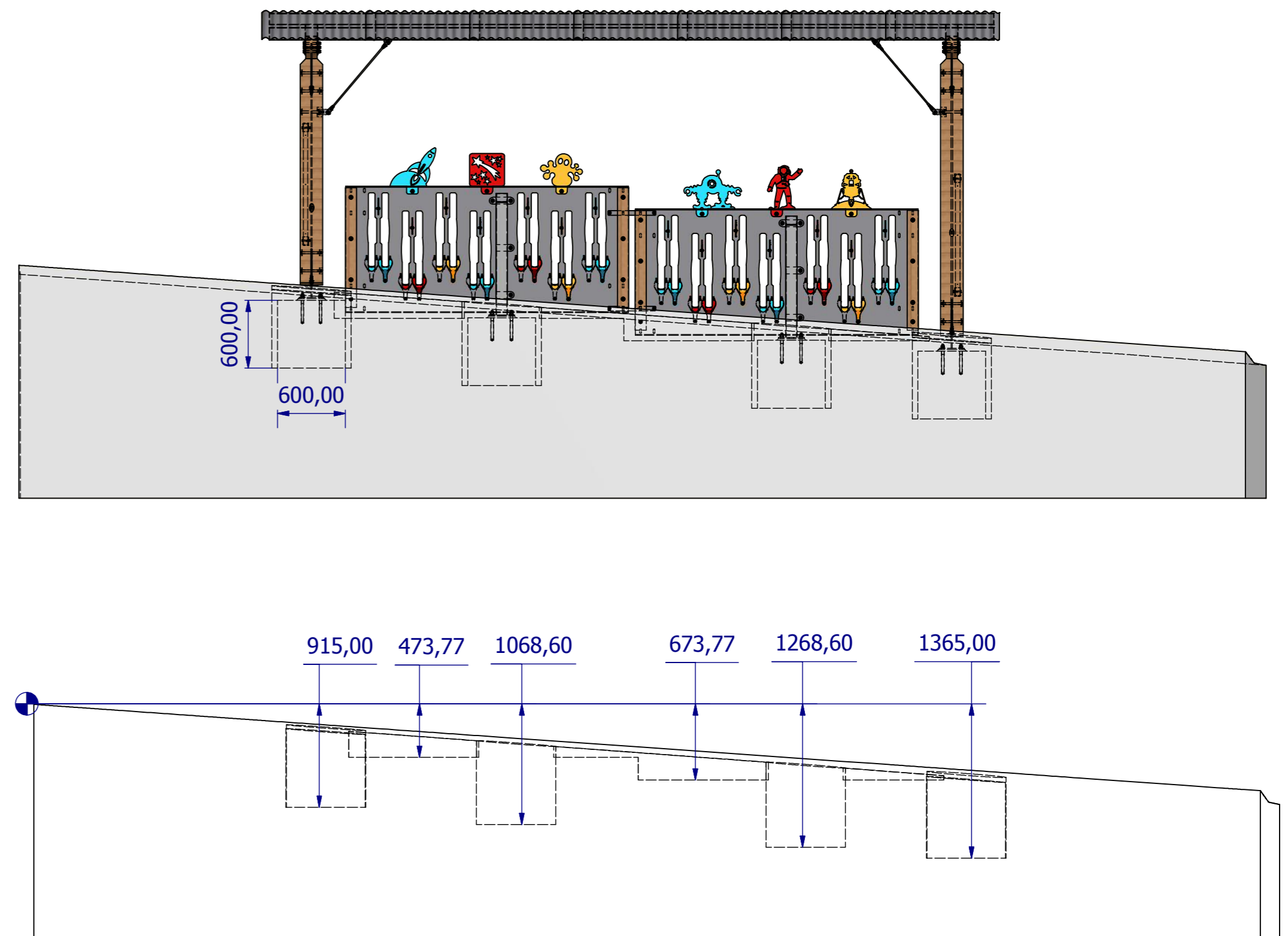
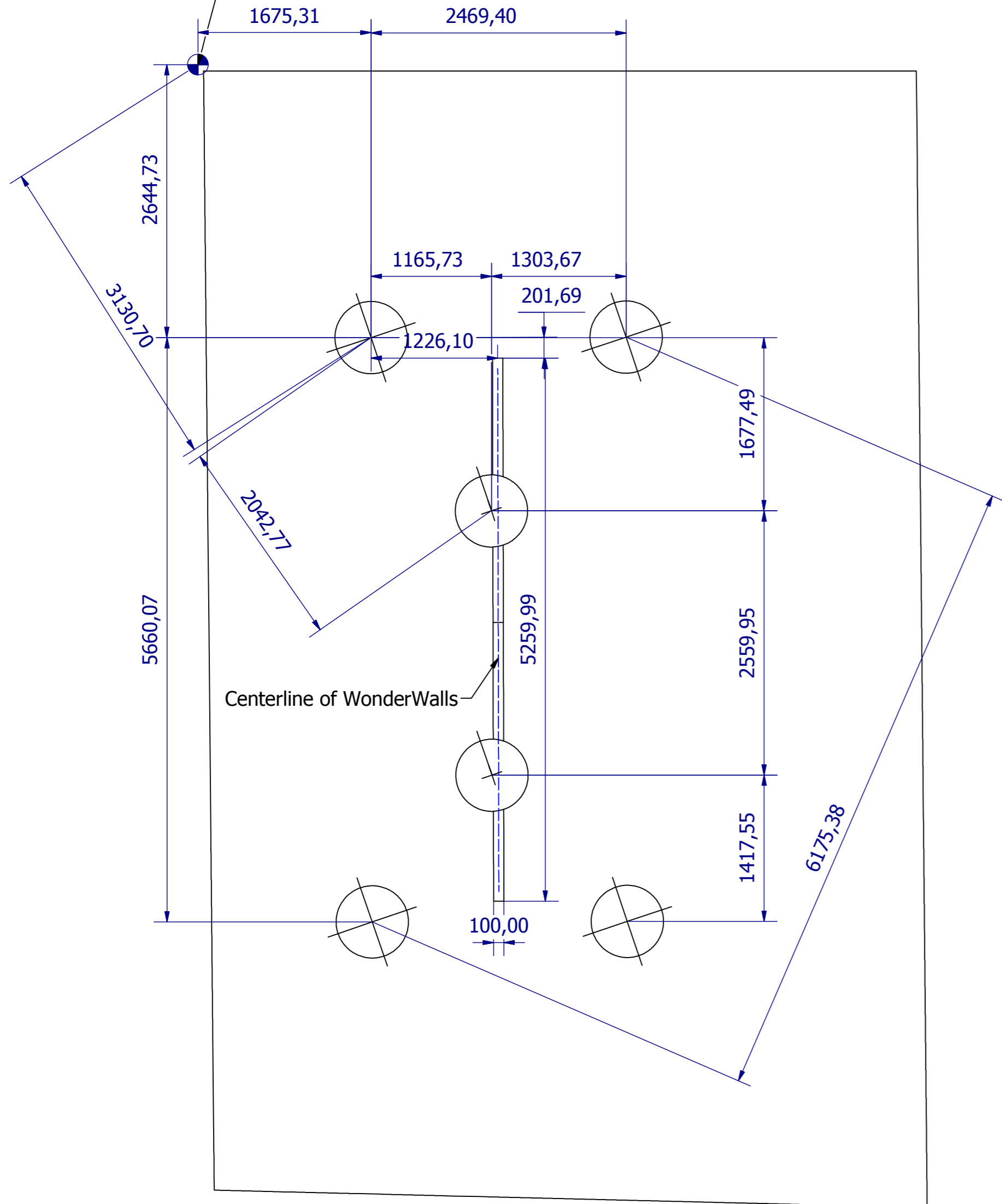


**DATUM**

Top left corner of pad on concrete skirting  
[ Survey level 50.06 ]



THE BIG BARN, 14 GREENGATE RD,  
WEDHAMPTON, DEVIZES,  
WILTS, SN10 3QB  
01380 840 819  
TEAM@HBDDESIGNS.CO.UK  
© H-B DESIGNS 2010 All Rights Reserved.

IF THERE IS ANY CONFLICTING  
INFORMATION OR CONFUSION IN ANY  
ITEM, QUERY BEFORE PROCEEDING

UNLESS OTHERWISE SPECIFIED:  
DIMENSIONS ARE IN MILLIMETERS  
TOLERANCES: LINEAR: ±0.2mm ANGULAR: 20°

**NOTES:**

THIS DRAWING IS TO BE READ IN CONJUNCTION WITH ALL RELEVANT ENGINEERS DETAILS & PROJECT SPECIFICATIONS

ALL MEMBERS TO BE ROBUSTLY FRAMED TOGETHER WITH PROPRIETARY CLIPS OR SIMILAR  
CONTRACTOR TO ENSURE STABILITY OF ALL ELEMENTS OF WORK DURING CONSTRUCTION  
METHOD STATEMENTS TO BE PROVIDED  
ALL BOLTS TO BE GALVANIZED GRADE (8.8) UNLESS NOTED OTHERWISE

MINIMUM ALLOWABLE BEARING CAPACITY TO BE 100kN/m<sup>2</sup> FOUNDED ON VIRGIN GROUND  
ALL FOUNDATION CONCRETE TO BE GRADE C35 WITH MAX W/C RATIO 0.55 AND MIN CEMENT CONTENT OF 300kg/cubic metre  
CONTRACTOR TO TAKE SITE MEASUREMENTS PRIOR TO ANY DETAILING OF FABRICATION DRAWINGS  
ALL SCREWS, STRAPS & FITTINGS ETC TO BE GALVANIZED TO BS EN1481 1999 UNLESS NOTED OTHERWISE  
ALL SCREW, STRAPS & FITTINGS ETC TO BE ANTI VANDALISM SPECIFICATION

**PROPRIETARY AND CONFIDENTIAL**  
THE INFORMATION CONTAINED IN THIS DRAWING IS THE SOLE PROPERTY OF H-B DESIGNS.  
ANY REPRODUCTION IN PART OR AS A WHOLE WITHOUT THE WRITTEN PERMISSION OF H-B DESIGNS IS PROHIBITED.

DRAWN BY: JL  
DATE: 17/11/2010  
CHECKED:  
APPROVED:

TITLE: Corsham 3d Base.ipt

PRT NO. Corsham Groundwork V2

SCALE: 1:40 SHEET: 1

MATERIAL: n/a FINISH: n/a

THIRD ANGLE PROJECTION DO NOT SCALE DRAWING

A2